

ATLANTIC – T SERIES – LOW IMPEDANCE

The 2-way sound columns of the ATLANTIC-T series with maximized radiation surface were developed for the effective and lifelike reproduction of speech and music. In any kind of premises they show a perfect symbiosis of technique and perfect design.

Equipped with 4" woofers + 1" tweeter the fidelity is even in the lower frequencies of a sublime dynamic and sonority. Thanks to this characteristics and the remarkable power handling the speaker system ATLANTIC is considered to be a class A system.

For fixed installation, there is a female M6 thread on the top and bottom, and two continuous grooves for M6 or M8 sliding blocks along the entire length on the back.

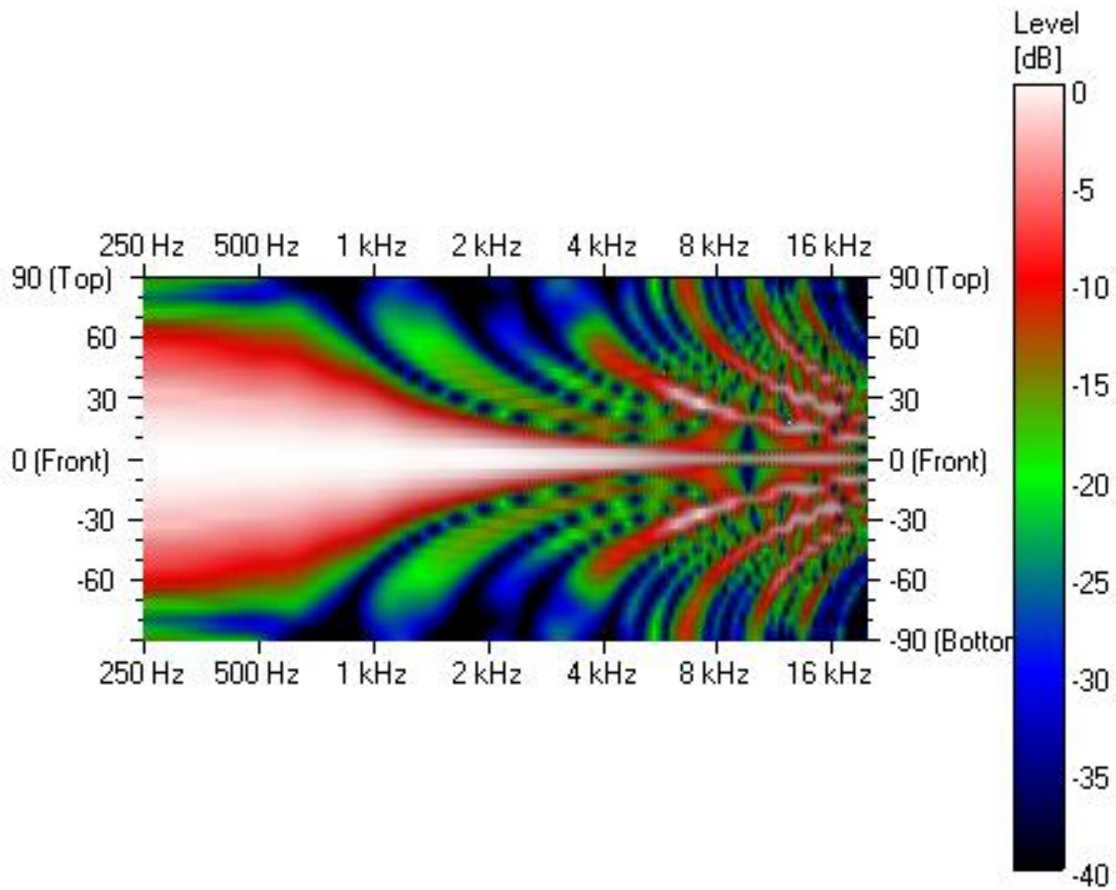
The sound columns are also available in the version ATLANTIC-TS with 100V technology.

Deliverable in all RAL and DB colours, other colours on request.

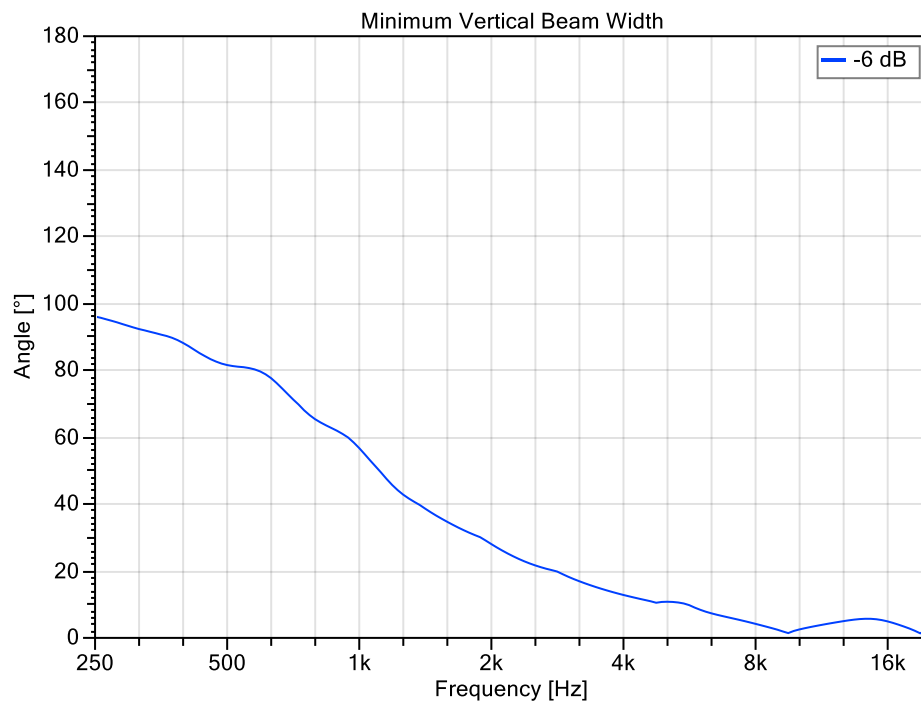
TECHNICAL SPECIFICATIONS

	T 04LZ	T 08LZ	T 12LZ	T 16LZ
Number of loudspeakers	4	8	12	16
Loudspeaker system	Coaxial	Coaxial	Coaxial	Coaxial
Woofers	4"	4"	4"	4"
Woofers magnet	Ferrite	Ferrite	Ferrite	Ferrite
Tweeter	Dome 1"	Dome 1"	Dome 1"	Dome 1"
Tweeter magnet	Neodymium	Neodymium	Neodymium	Neodymium
Frequency response	100-20 kHz	100-20 kHz	100-20 kHz	100-20 kHz
Impedance	8/16 ohm	4/16 ohm	10 ohm	8 ohm
Rated power handling AES	180 W (with pink noise, 6 dB crest factor)	360 W (with pink noise, 6 dB crest factor)	540 W (with pink noise, 6 dB crest factor)	720 W (with pink noise, 6 dB crest factor)
Continuous power handling	360 W (3 dB greater than rated power)	720 W (3 dB greater than rated power)	1080 W (3 dB greater than rated power)	1440 W (3 dB greater than rated power)
Nominal SPL @ 1W/1m	95 dB	97 dB	99 dB	100 dB
Max SPL @ Rated Power/1m	114 dB	116 dB	118 dB	120 dB
Horizontal dispersion angle	100° (-6 dB average 500 Hz to 8 kHz)	100° (-6 dB average 500 Hz to 8 kHz)	100° (-6 dB average 500 Hz to 8 kHz)	100° (-6 dB average 500 Hz to 8 kHz)
Vertical dispersion angle	38° (-6 dB average 500 Hz to 8 kHz)	20° (-6 dB average 500 Hz to 8 kHz)	14° (-6 dB average 500 Hz to 8 kHz)	10° (-6 dB average 500 Hz to 8 kHz)
Case construction material	Aluminium	Aluminium	Aluminium	Aluminium
Height	552 mm	974 mm	1394 mm	1814 mm
Width	122 mm	122 mm	122 mm	122 mm
Depth	120 mm	120 mm	120 mm	120 mm
Weight	4,5 kg	9,9 kg	14,5 kg	19,3 kg
Colour	RAL 9010	RAL 9010	RAL 9010	RAL 9010

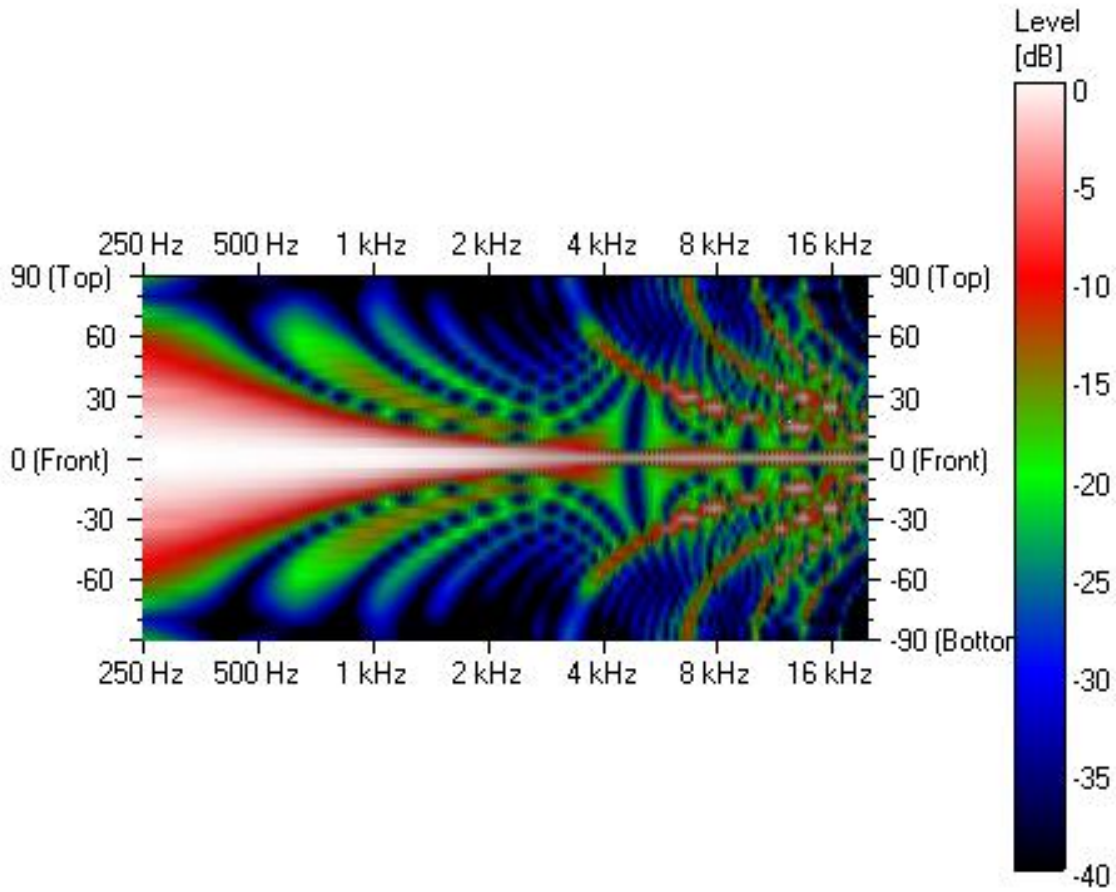
T 04LZ - VERTICAL MAP



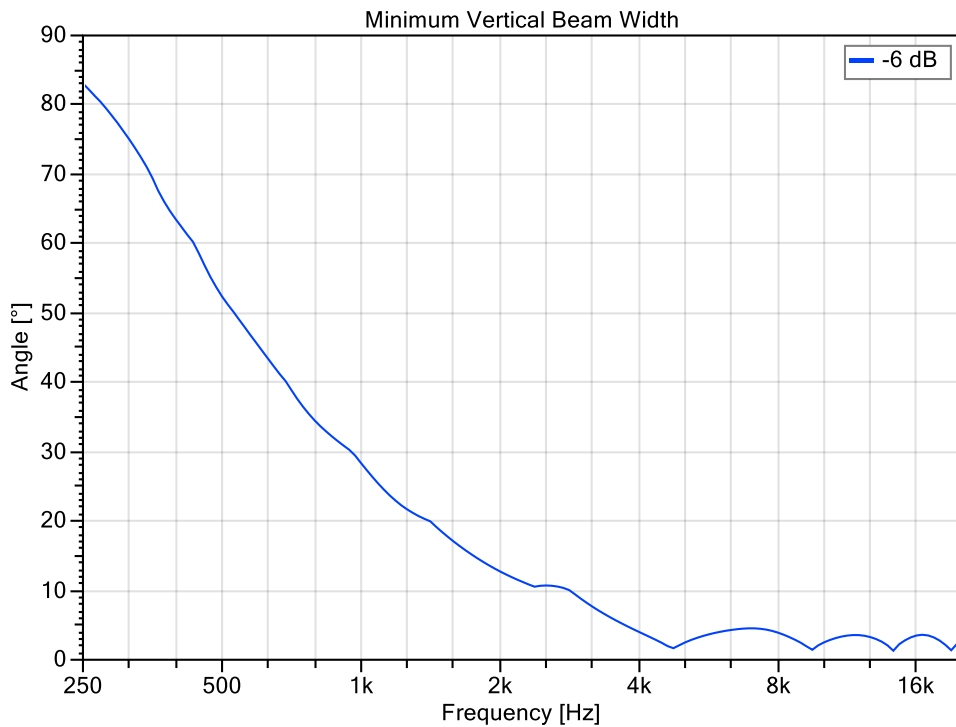
T 04LZ - VERTICAL BEAM WIDTH



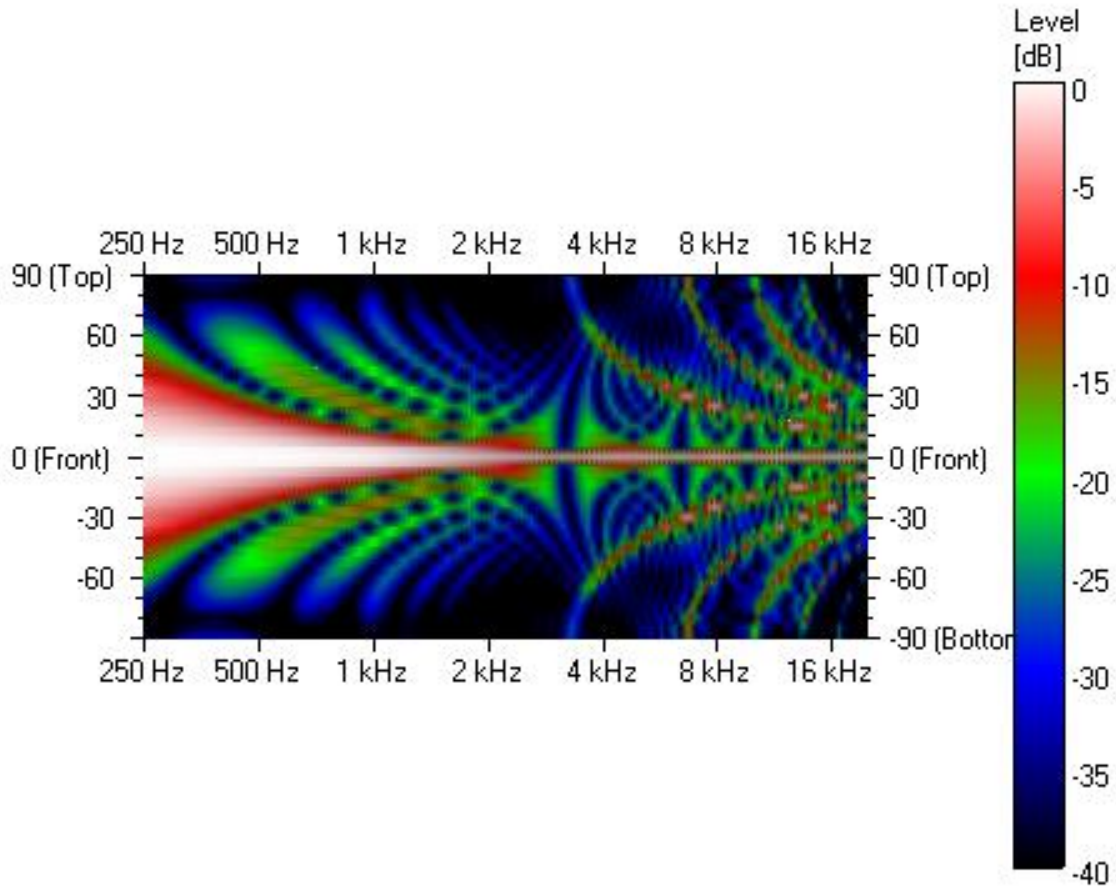
T 08LZ - VERTICAL MAP



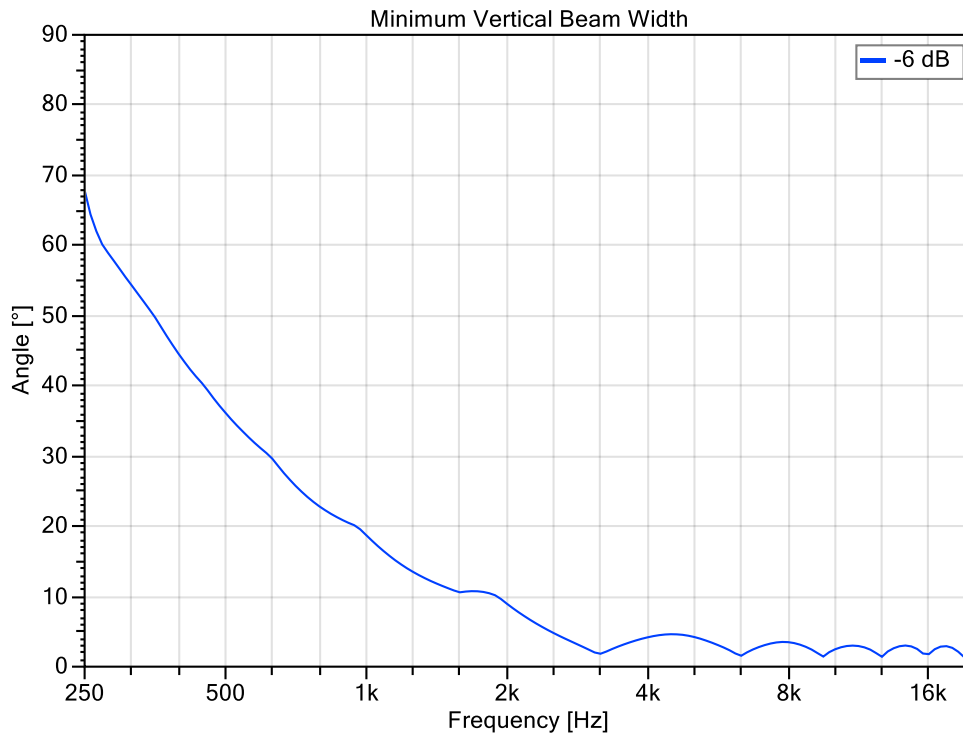
T 08LZ - VERTICAL BEAM WIDTH



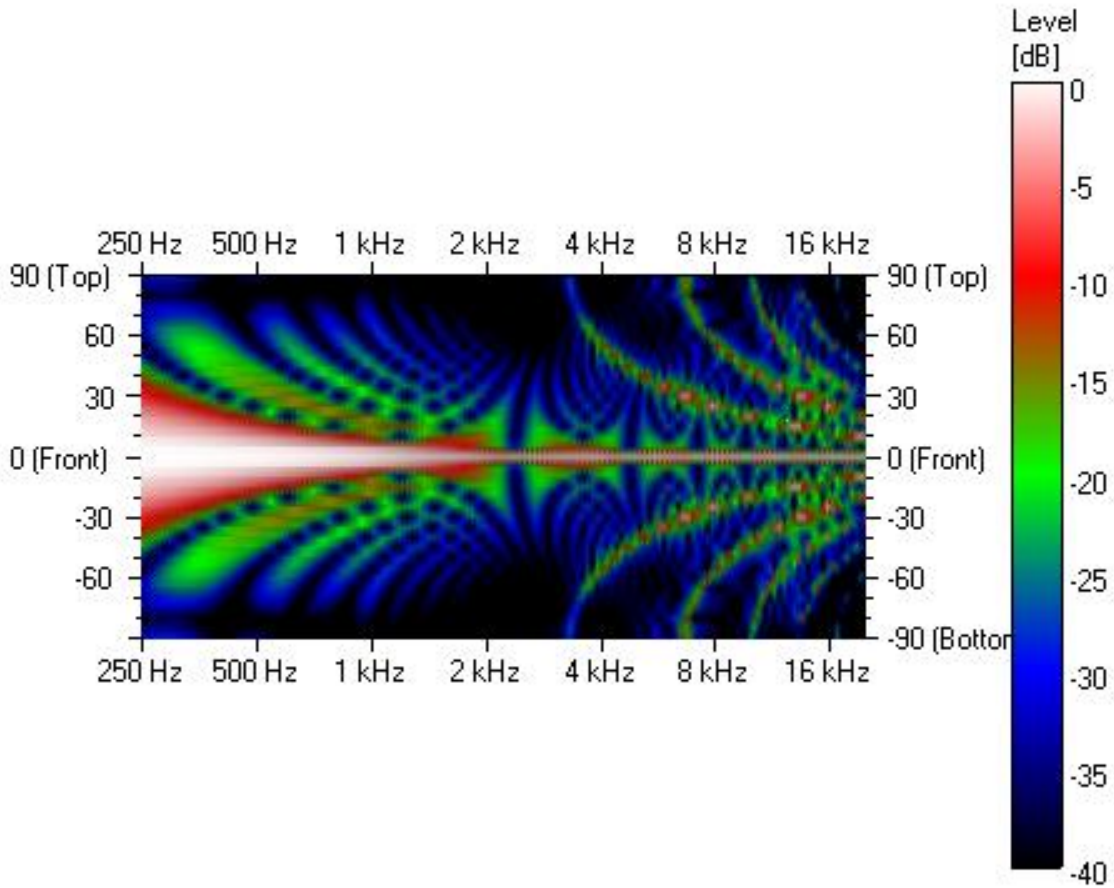
T 12LZ - VERTICAL MAP



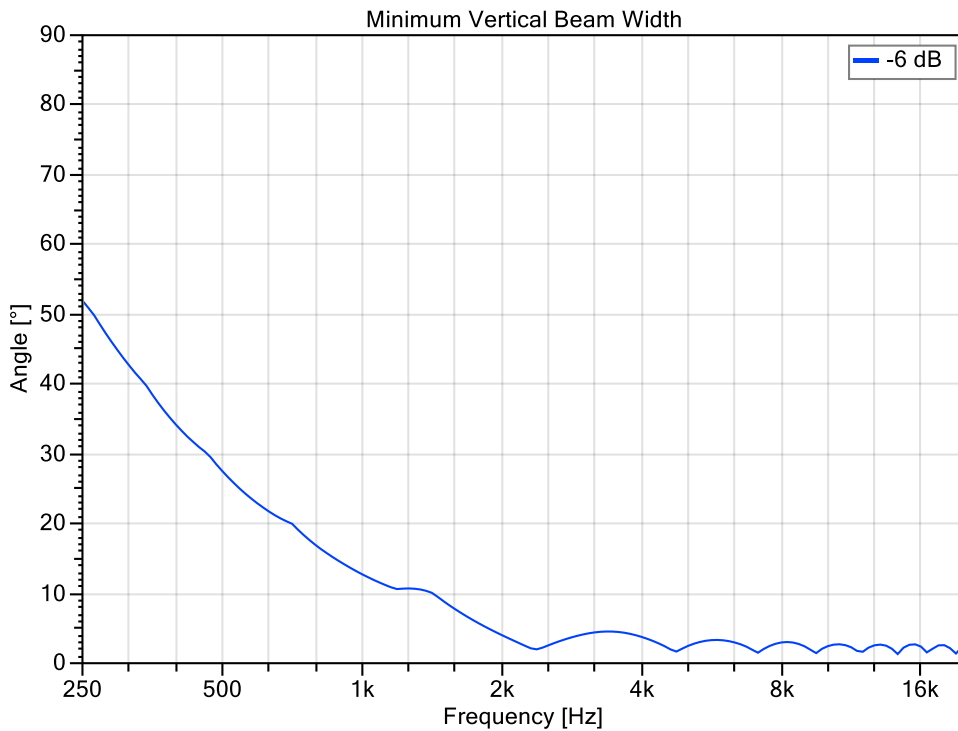
T 12LZ - VERTICAL BEAM WIDTH



T 16LZ - VERTICAL MAP



T 16LZ - VERTICAL BEAM WIDTH



Notice

ALL AVE mbH DESIGN SPECIFICATIONS, FILES, DRAWINGS, TABLES, LISTS, AND OTHER DOCUMENTS ARE BEING PROVIDED "AS IS."

AVE mbH MAKES NO WARRANTIES, EXPRESSED, IMPLIED, STATUTORY, OR OTHERWISE WITH RESPECT TO THE MATERIALS, AND EXPRESSLY DISCLAIMS ALL IMPLIED WARRANTIES OF NONINFRINGEMENT, MERCHANTABILITY, AND FITNESS FOR A PARTICULAR PURPOSE.

Information furnished is believed to be accurate and reliable. However, AVE mbH assumes no responsibility for the consequences of use of such information or for any infringement of patents or other rights of third parties that may result from its use. No license is granted by implication or otherwise under any patent or patent rights of AVE mbH. Specifications mentioned in this publication are subject to change without notice. This publication supersedes and replaces all information previously supplied. AVE mbH products are not authorized for use as critical components in life support devices or systems without express written approval of AVE mbH Corporation.

Trademarks

AVE mbH, "ATLANTIC" and the AVE logo are trademarks or registered trademarks of AVE mbH in the Germany and other countries. Other company and product names may be trademarks of the respective companies with which they are associated.

Copyright

© 2020 AVE mbH. All rights reserved

Certificate 



AVE mbH
Gustav-Rau-Straße, 6
74321 - Bietigheim-Bissingen
Germany

Telefon: +49 (0) 7142-78879-10
Fax: +49 (0) 7142-78879-18

www.ave-stuttgart.com

info@ave-stuttgart.de